



Elect
Christine Moore
to the Orange County Commission #2

CROSS-COUNTY TRANSPORTATION

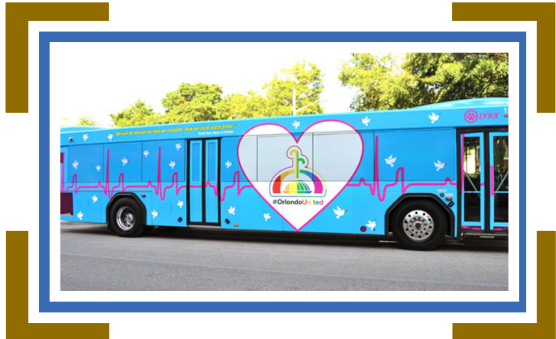
PUBLIC TRANSPORTATION

- ◆ We need to continue to improve the East-West Connections through a multi-modal approach. The SunRail will never be completely financially sound until this occurs.
- ◆ Moore will encourage discussions on the additional proposed rail line from the airport to International Drive and connecting to the current North-South alignment of Lynx.
- ◆ Working with all the transportation agencies like MetroPlan, Central Florida Regional Planning Council, etc will help their to be a more collaborative and multi-modal approach.
- ◆ Christine supports the efforts of Commissioner Victoria Siplin to build an additional Lynx Bus Hub in the Silver Star corridor.

Orange County suffers from the highest number of pedestrian fatalities in the country, and citizens report traffic as their number one concern. I will make these two issues my top priority, because the folks in district two and the entire county deserve better.

TRAFFIC REDUCTION

- ◆ Major traffic concerns exist on Orange Blossom Trail through Rosemont, Powers and Clarcona-Ocoee Roads, Welch Road in Apopka.
- ◆ The current \$4.25 million dollar budget must be realigned to better meet transportation needs. That means fixing the areas that we already know about and listening to community members about further adjustments they would like to see.
- ◆ Community meetings must be held to keep citizens apprised of all major county road improvements.



When our communities are strong, our county is even stronger!