

# AFFORDABLE HOUSING

## CREATING AN EQUITABLE ENVIRONMENT

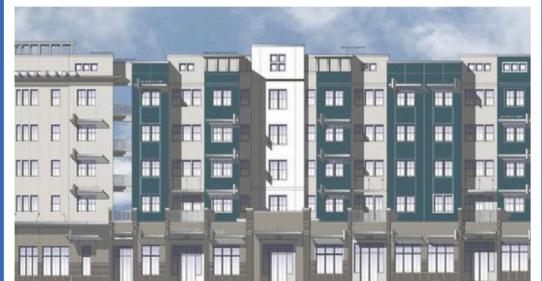
- ◆ In accordance with the 2015 Fair Housing Act, and ruling opinion of the United States Supreme Court, it is Orange County's responsibility to spread access to affordable housing in both low and high-income communities.
- ◆ We want to ensure that when we are creating these low-income housing projects, that we construct them with reasonable and usable features. Fiscal responsibility comes with the prerequisite of being rational.
- ◆ Right now, land managers are not looking at the school zone in which the housing project resides. If the housing project happens to be within the boundaries of a school that is over-capacity, then the cost can triple in impact fees. Christine is committed to exploring the abatement of some of these impact fees or capacity-enhancement fees. She has also said that she will work with School-board members and chair-elect, Theresa Jacobs to identify the most logical areas to start affordable housing projects.

## THE SADOWSKI FUND & PERMIT PROCESS

- ◆ There has to be coordinated lobbying efforts in Tallahassee to replenish the state's Sadowski Fund. Consistently, doc stamp taxes were meant to supply the Sadowski Fund, but they have instead been reallocated into general revenue to balance the budget.
- ◆ Locations that can accommodate affordable housing projects ought to be put on a fast-track process for permitting procedures.
- ◆ The board of county commissioners can work with developers to identify parcels that are shovel-ready to accommodate a fast-track permitting process.



*This is an issue that is deeply personal to me and my family, and I'm committed to finding comprehensive solutions to the affordable housing crisis.*



*When our communities are strong, our county is even stronger!*